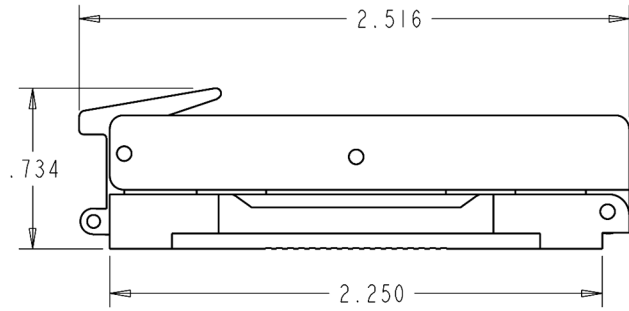
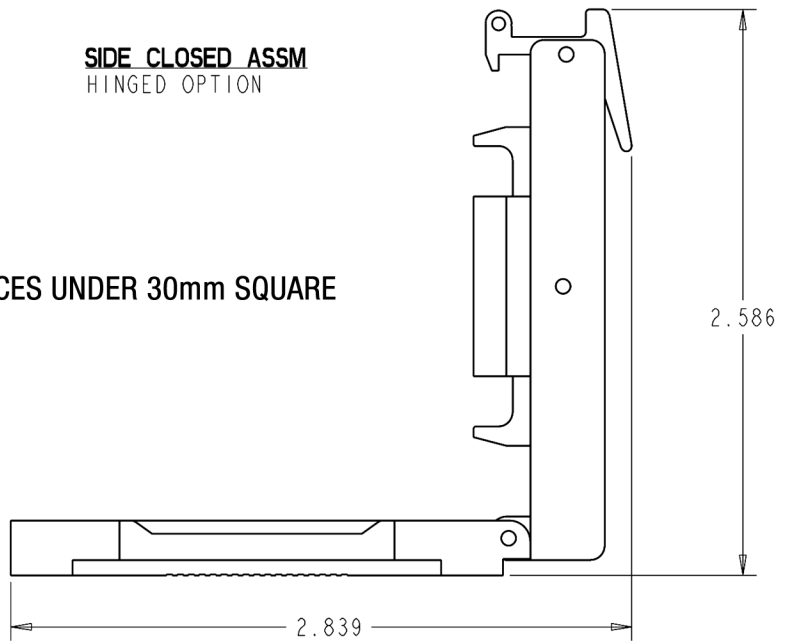


FRONT CLOSED ASSM
DOUBLE LATCH OPTION



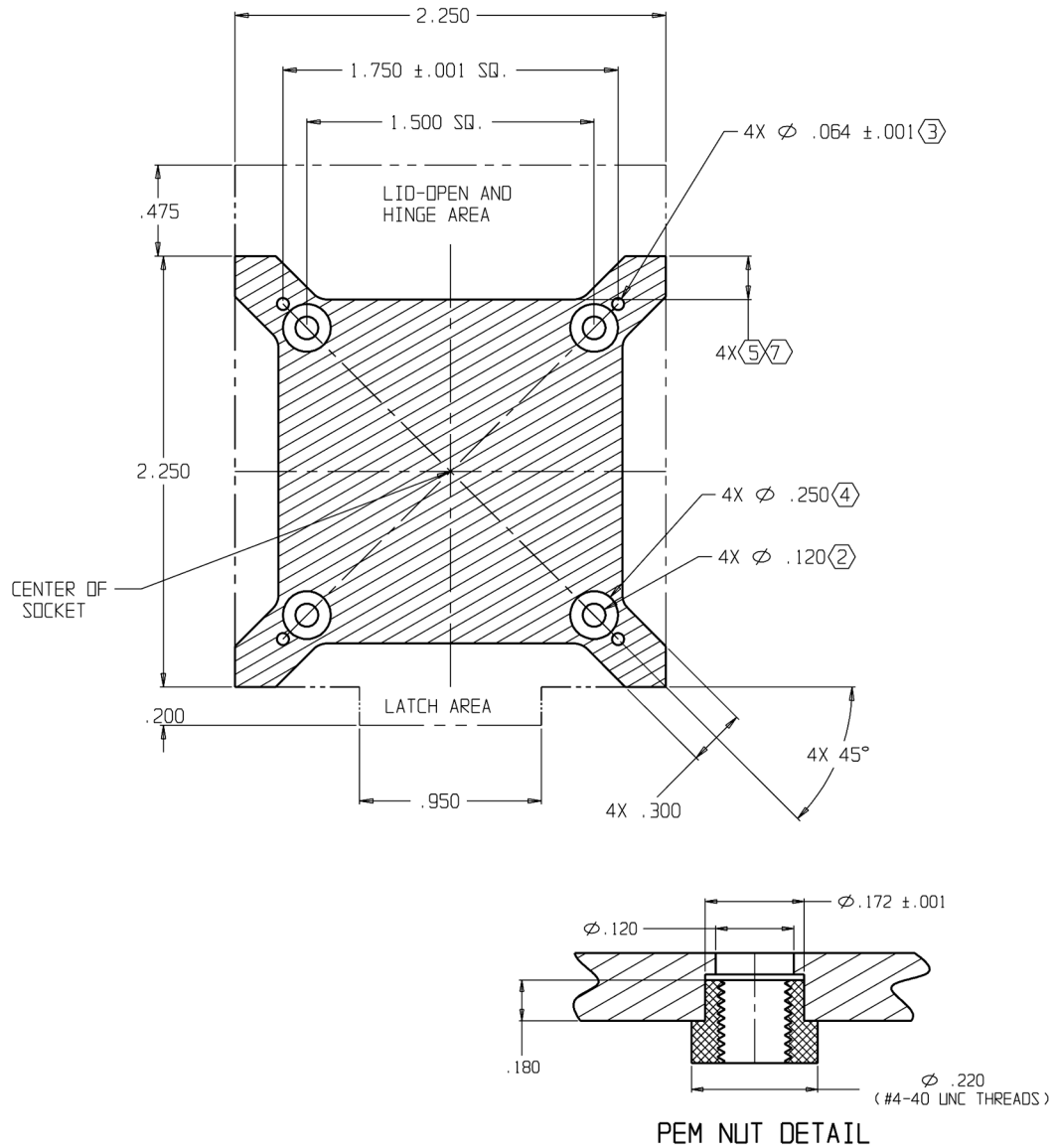
SIDE CLOSED ASSM
HINGED OPTION

HIGH-PERFORMANCE RF TEST SOCKET FOR DEVICES UNDER 30mm SQUARE



SIDE OPEN ASSM
HINGED OPTION

**LARGE TEST SOCKET LOAD BOARD FOOTPRINT
(TOP VIEW FROM SOCKET SIDE)**



NOTES:

1. NO SOLDER MASK OR LEGEND WITHIN .060 OF HATCHED AREA.
2. PEM NUTS OR BACKING PLATE WITH #4-40 UNC THREADS SUGGESTED FOR SOCKET MOUNTING.
3. HOLES FOR SOCKET ALIGNMENT PINS.
4. PLATED PAD FOR TEST SOCKET MOUNTING.
5. AREA FOR DECOUPLING/COMPONENTS .065 MAX HIEGHT.
6. CONTROLLING DIMENSIONS IN INCHES EXCEPT WHERE NOTED BY "mm" SUFFIX.
7. DIM DEPENDANT ON PACKAGE SIZE (APPROX. RANGE: .050" TO .350")

FOOTPRINT FITS DEVICES WITH BODY SIZES FROM 14mm to 30mm SQUARE