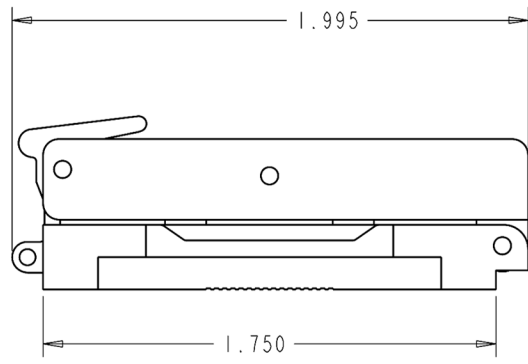
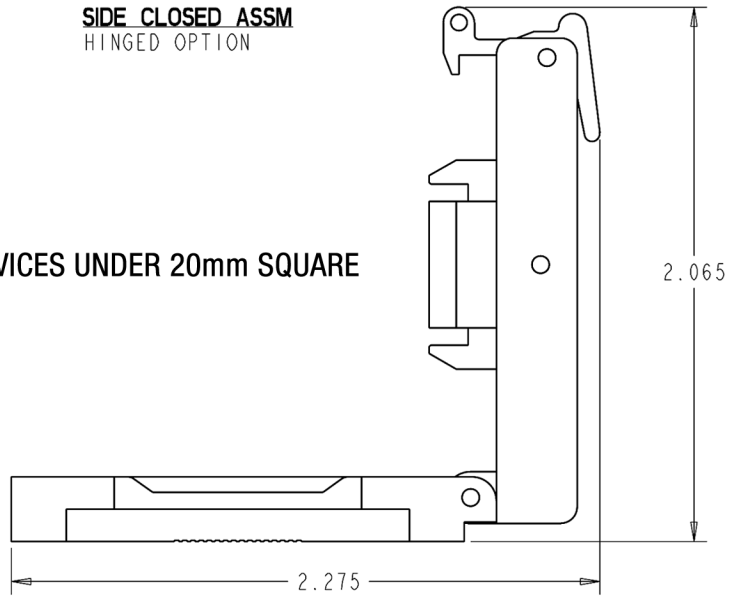


FRONT CLOSED ASSM
 DOUBLE LATCH OPTION
 (DETACHABLE LID)



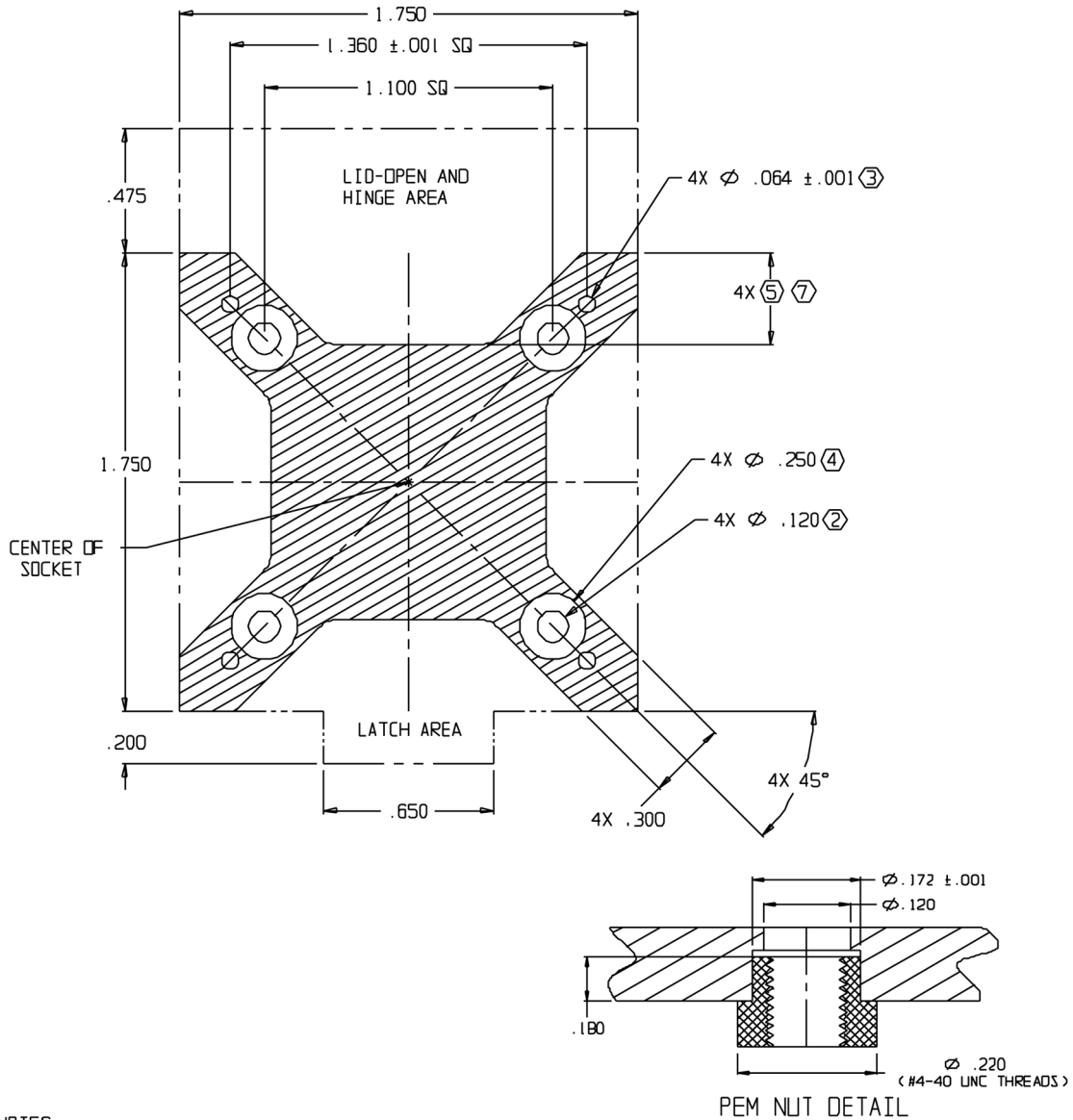
SIDE CLOSED ASSM
 HINGED OPTION

HIGH-PERFORMANCE RF TEST SOCKET FOR DEVICES UNDER 20mm SQUARE



SIDE OPEN ASSM
 HINGED OPTION

**MEDIUM TEST SOCKET LOAD BOARD FOOTPRINT
(TOP VIEW FROM SOCKET SIDE)**



- NOTES:
1. NO SOLDER MASK OR LEGEND WITHIN .060 OF HATCHED AREA.
 - ② PEM NUTS OR BACKING PLATE WITH #4-40 UNC THREADS SUGGESTED FOR SOCKET MOUNTING.
 - ③ HOLES FOR SOCKET ALIGNMENT PINS.
 - ④ PLATED PAD FOR TEST SOCKET MOUNTING.
 - ⑤ AREA FOR DECOUPLING/COMPONENTS .065 MAX HIEGHT.
 6. CONTROLLING DIMENSIONS IN INCHES EXCEPT WHERE NOTED BY "mm" SUFFIX.
 - ⑦ DIM DEPENDANT ON PACKAGE SIZE (APPROX. RANGE: .050" TO .350")

FOOTPRINT FITS DEVICES WITH BODY SIZES FROM 10mm TO UNDER 20mm SQUARE