



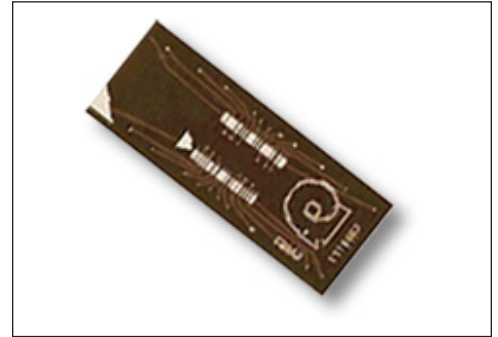
# P/N 36-651000-10 36-Pin SSOP-to-0.6 DIP Adapter

## GENERAL SPECIFICATIONS

- PCB: FR-4, 0.062 [1.56] or 0.094 [2.39] thick
- PADS: bare Cu protected with Entek® by Enthone or Omikron® white Sn to eliminate co-planarity concerns and solder bridges
- MALE PINS: Brass 360 1/2-hard per UNS C36000, ASTM B16/B16M
- OPERATING TEMPERATURE: 221°F [105°C]
- MALE PIN PLATING: 200µ [5.08µ] Sn/Pb 93/7 per ASTM B579-73 over 100µ [2.54µ] Ni per SAE-AMS-QQ-N-290

## MOUNTING CONSIDERATIONS

- Standard thru-hole



**CUSTOMIZATION:** In addition to the standard products shown on this page, Aries specializes in custom design and production. Special materials, platings, sizes, and configurations can be furnished, depending on the quantity. **NOTE:** Aries reserves the right to change product general specifications without notice.

## ORDERING INFORMATION

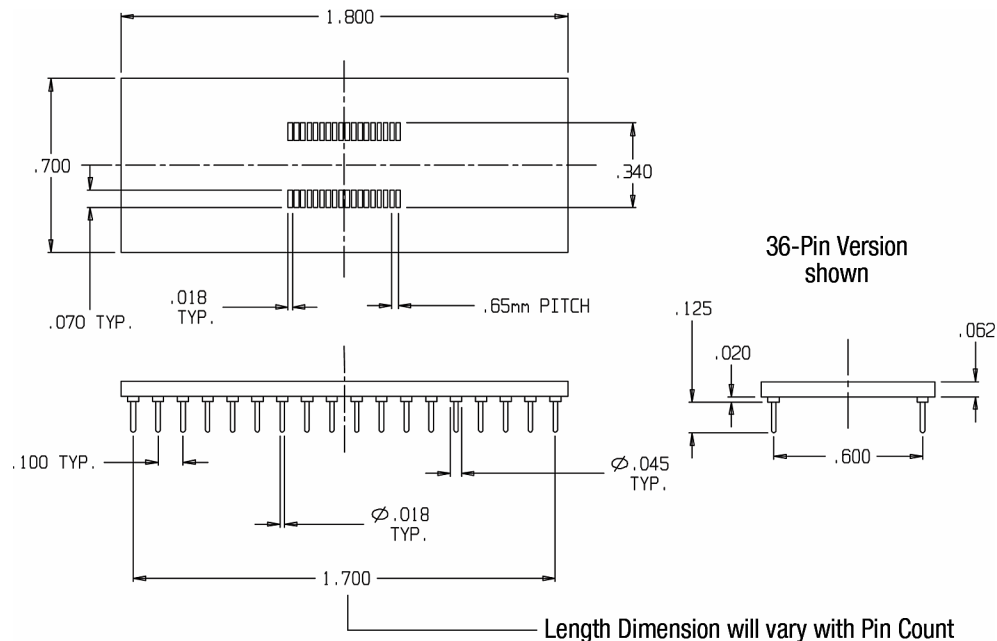
24-651000-10

24-651000-10-P = Panelized Version

ALL DIMENSIONS: INCHES [MILLIMETERS]

ALL TOLERANCES: ±0.005 [0.13] UNLESS OTHERWISE SPECIFIED

CONSULT FACTORY FOR OTHER SIZES AND CONFIGURATIONS



Bristol, PA 19007-6810 USA  
 TEL (215) 781-9956 • FAX (215) 781-9845  
 WWW.ARIESELEC.COM • INFO@ARIESELEC.COM

PRINTOUTS OF THIS DOCUMENT MAY BE OUT OF DATE AND SHOULD BE CONSIDERED UNCONTROLLED

18065  
Rev. AA